

## Sincerest Thanks To Our Friends

We are pleased to recognize those who have supported the Design Center in the past 12 months. Each contribution from a "Friend" is gratefully received.

### Top of The Line Friends

AmSouth Bank  
Brunswick Boat Group  
Dr. Gideon Fryer  
Patrick Hardin  
James E. Hodge III, P.E.

Home Federal Bank  
Dr. Joseph E. Johnson  
Doug McCarty, AIA  
Bill + Jane Myers  
TIS Insurance Services

### Partner Friends

Blaine Construction Corporation  
Curtis Catron, ASLA  
C-Three Group, LLC  
Denark Construction, Inc.  
Design Innovations Architects  
Dewhurst Properties  
Faris Eid, AIA  
Elizabeth Gassel, ASLA  
Holrob Investments

Insite Property Associates, LLC  
Len Johnson and Associates  
Bruce & Elizabeth McCarty  
Chuck Morris  
R.M. Moore Real Estate  
Mayor Mike Ragsdale  
Regal Entertainment Group  
S+ME Incorporated  
Segundo Properties

### Associate Friends

Annette Anderson + Robert Wilson  
Barbara Apking  
Benefield Richlers Co.  
Brewer Ingram Fuller Architects, Inc.  
Citizens Bank + Trust Co.  
Cope Associates Architecture  
Creative Structures, Inc.  
Dollar and Ewers Architecture, Inc.  
Elizabeth Eason + Brad Rayson  
Mary Read English  
FMP Real Estate Services, Inc.  
ImagePoint  
Johnson Architecture  
Kathoff Fabricators  
LBWC Investment Advisors  
Mary Lett  
The Lewis Group Architects, Inc., P.C.  
Vreeland Engineers, Inc.  
Mallia Engineering Company

Sharon McKee  
Merill Construction, Inc.  
Michael Brady Inc.  
Ric Mixon, AIA  
Robert C. Parrott  
J. Michael Parish  
John and Betsy Quinn  
Keith Richardson  
Ross/Fowler PC  
Robert K. Rittenhouse  
Robert Shagan + Family  
Frank Rothermel  
Frank Sparkman, AIA  
Sierchi Lofts  
Jenny Thurman, ASLA  
Mr. & Mrs. Thomas Ungs

### Good Friends

George Arants, Jr.  
Morley Bankston  
G. Patrick Barney  
Patricia B. Bing  
Kim Davis  
Robert E. Freeman  
Knox Heritage, Inc.  
Mrs. James Harter

Mary Lou Homer  
Greg LaFortune  
Renee Kesler  
Daniel Noe  
Sherri Parker Lee  
Ann G. Watson  
Mary Powers Ryan  
Wayne + Connie Whitehead

### In-Kind Sponsors

Alpha Graphics  
Arts & Culture Alliance  
B&T Distributing Company  
Cherokee Distributing  
Chuck Morris, Morris Creative Group  
Design Innovations - Computer Equipment  
Hodge Engineering  
Knoxville Community Development Corporation  
Doug McCarty, AIA - Computer Equipment  
Nama Sushi Bar  
Linda Ogile, Riverside Towers  
The O'Hanlon Group  
Beth Phillips, Computer Equipment  
Public Building Authority - Storage Space  
Sam's Party Store  
Robert Shagan - Parking Spaces  
Tennessee Valley Authority  
UT College of Architecture + Design  
Tinah Ulman  
John Walker - Legal Assistance

### Grantors

AmSouth Bank  
BWXI - Y12  
City of Knoxville Community Development  
Councilman Bob Becker  
Councilman Joe Hultquist  
Councilman Barbara Pelot  
Councilman Chris Woodhull  
First Tennessee Bank Foundation  
Knox County Government  
Sunrise Foundation  
Tennessee Arts Commission  
United Way of Greater Knoxville  
United Way of Loudon County

### Client Contributors

Walter J. Bacon, Doughboy Statue  
Destiny Center of the Great Smoky Mountains  
Domestic Violence Crisis Center of Lenoir City  
James White's Fort Association  
Knoxville High School Alumni Association  
Harriman Economic Advisory Team  
Knoxville Rowing Association  
Oakwood Lincoln Park Organization  
REACHS  
Tennessee Technology Access Center

### ETCDC Board of Directors

**Board Officers**  
Sharon McKee  
President  
Chuck Morris  
Vice President  
Frank Sparkman, AIA  
Treasurer + Past President  
Elizabeth M. Gassel, ASLA  
Secretary  
Dr. Gideon Fryer  
Board Member Emeritus  
John A. Walker, Jr. Esq.  
Board Member Emeritus

**Board Members**  
Curtis E. Catron, ASLA  
Faris Eid, AIA  
Professor Patrick Hardin  
James E. Hodge III, P.E.  
Dr. Joseph E. Johnson  
Bruce McCarty, FAIA  
Douglas H. McCarty, AIA  
Ric Mixon, AIA  
Beth Phillips  
Jan F. Simek, Ph.D.  
Jay C. Vincent

### Ex-Officio Members

Gregor Smea, AIA  
American Institute of Architects  
John McRae, FAIA  
Dean, UT College of Architecture + Design  
Rogers Doughty  
City of Knoxville  
Grant Rosenberg  
Knox County  
M. Jane Myers  
East Tennessee Regional Leadership Association  
Sara J. Hedstrom, ASLA  
American Society of Landscape Architects

### Executive Director

David M. Watson  
**Administrative Assistant**  
Jan Mosadegh  
**Program Coordinators**  
Kylie Kaiser  
Chris Sayre



# Better Communities By Design

2005 Fall Newsletter  
David Watson : Executive Director

## Entering Our 36th Year

"Years after a gathering of Knoxvilleians formed the East Tennessee Community Design Center, it continues to evolve as a place where people with ideas about improving their communities come to get the professional assistance they need but cannot afford. The Community Design Center is, simply, people. Their interests and skills vary greatly, but they share the willingness to work together to improve the quality of life in East Tennessee Communities. Some have continued their involvement. Others come and go. New people and new ideas are always welcome." This is an excerpt from a 1985 Community Design Center newsletter where the Design Center was in the midst of celebrating its 15-year anniversary. I chose to use these words in this 2005 newsletter as it still holds true while we celebrate the Design Center's 35-year anniversary. The Board members pictured represent over 145 years combined total service to the Design Center with the entire Board representing over 250 years combined total service. That's impressive. To all the Board members, volunteers, supporters and contributors (many times all one in the same), past, present and future, I say thank you for making this a strong organization, built on a great foundation. To all the funders, such as Knox County, thank you for believing in this organization that has stayed focused on its mission of providing better communities by design.



Knox County Mayor Mike Ragsdale along with Knox County Commissioner Billy Tindell, came to the September ETDCD Board meeting and presented a check for \$15,000 to be used to support Design Center projects implemented in Knox County.

Standing (left to right): John McRae, FAIA, Knox County Commissioner Billy Tindell, Doug McCarty, AIA, Bruce McCarty, FAIA, Knox County Mayor Mike Ragsdale, Chuck Morris, Jim Hodge, Grant Rosenberg, Ric Mixon, AIA, and Rogers Doughty. Seated: Gideon Fryer, Liz Gassel, ASLA, Sharon McKee, Sara Hedstrom, ASLA, Beth Phillips, and David Watson.

*David Watson*

## Thank You, Renee!

The East Tennessee Community Design Center reluctantly says good-bye to Renee Kesler who has just recently stepped down from serving on the Design Center Board. Renee is a strong leader in community development efforts across East Tennessee and has recently accepted the position of Director of Community Development for the City of Knoxville. The Design Center staff and Board of Directors unite in saying, "Thank you, Renee!" for your support of the Design Center.



1522 Highland Avenue  
Knoxville, TN 37916  
(865) 525-9945

Visit [www.etcdc.org](http://www.etcdc.org)



Community Partner



Nonprofit Org.  
U.S. POSTAGE  
PAID  
Permit No. 647  
Knoxville, TN



## BOARD MEMBER PROFILE :

### Faris Eid, AIA - Design Innovations Architects

Faris Eid has been a member of the ETDCD Board since 1997 and has served in various capacities including Treasurer, Vice President, President, and Chair of the Finance and DesignWorks Committees. Faris currently serves as Chair of the 100 Block of Gay Street Event Committee. Faris recently was named MPC's Volunteer Award Recipient for having played significant roles in preserving historic resources, most notably in providing design services for the preservation of the 500 block of Gay Street while working with the 500 Block Task Force and Knox Heritage. Faris is the owner of Design Innovations Architects, with their office being based in the heart of Fort Sanders.

**Why did you want to become an Architect?** My Uncle was an Architect, and it was always between Art and Architecture. I guess at the end it was the challenge of designing the larger scale sculptures, being the buildings, and the ability of seeing them built that won me over to the Architecture side.

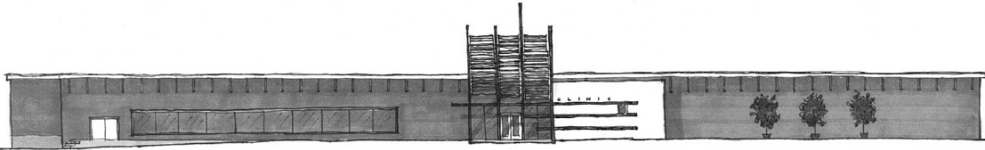
**Why did you become a Board member for the Design Center over eight years ago?** It was a way that I could give back to my community using my talents, in appreciation of what I was given in the form of opportunities in this country and financial grants that allowed me to gain my Architecture degree from UT. Since the Design Center's motto is "Better Communities by Design," what is your vision for communities of East Tennessee? East Tennessee has always been a place of good people and with the University of Tennessee's, as well as other institution's help, has become a diverse ethnic community with multiple backgrounds and talents. It is important to recognize this and to gain from it as a community. As for the work/live place, my vision is one of improving the economic and social health of the existing communities and neighborhoods. I would like to see new ones created which get built with emphasis on mixed zonings that allow for work/live communities with area parks and support facilities in close walking distance to the residential areas.

**Please tell us about your family and what your interests are outside of Architecture?**

I have been extremely happily married to Ghada for 14 years, and we have 2 great boys, Marwan, 11, and Rami, 9. Being an Architect is not a job, but a way of life. Thus hobbies and trips many times revolve around this. As a family we enjoy bike riding, and I coach soccer for my son's teams. We are currently building a tree house in the back yard - one really cool tree house!

## PROGRAM WORK :

The Design Center continues the tradition of using students from the University of Tennessee College of Architecture + Design. **Kylie Kaiser**, **Chris Sayre**, **Jennifer Pemberton**, and **Chris Collett** have worked hard this year executing the tasks of Design Center projects.



### REACHS COMMUNITY HEALTH CENTER :

**Gregor Smee, AIA + Jennifer Pemberton**

When REACHS purchased an abandoned grocery store, the Design Center was asked to assist in creating plans for renovation, programmatic planning, and cost estimation. Smee Architecture principal **Gregor Smee** volunteered his services to assist **Jennifer Pemberton** with the creation of schematic plans and elevations. Gregor also contributed several renderings, including the one pictured here, of the proposed facade.

### DOMESTIC VIOLENCE CRISIS CENTER :

**Dan Brewer, AIA + Kylie Kaiser**

The Lenoir City Domestic Violence Crisis Center, a non-profit organization which provides assistance to women and children in need, requested assistance in creating a plan for reconfiguration and organization of its existing space. With the help of Brewer Ingram Fuller Architects' **Dan Brewer**, ETCDC intern **Kylie Kaiser** produced as-built drawings of the existing facility, provided programming and schematic re-design services, and applied changes to create the reconfigured floor plans.



Board President **Sharon McKee** presents architect **Dan Brewer** with a certificate of appreciation, after he presented finished drawings at the Design Center Board Meeting.



Existing Lenoir City building, recently purchased by the Domestic Violence Crisis Center.

### A NEW FACE

**Chris Sayre**, a fourth-year student at the UT College of Architecture + Design, has been employed by the Design Center to work with the CDBG Community Development Program. Chris will spend the spring semester in Krakow, Poland through the College of Architecture's exchange program.



### NON-PROFIT COMMON OFFICE :

**Ric Mixon, AIA + Chris Collett**

The Partnership for Neighborhood Improvement requested technical assistance in the design, planning, and cost estimation for a new facility to serve members of non-profit organizations in the area. **Chris Collett**, in collaboration with Wystwynd Design's **Ric Mixon**, developed floor plans and designed elevations for the proposed building.



## Area Legislators Thanked At Special Reception

Tennessee arts organizations, of which the Design Center is one, recently had an opportunity to thank the area legislators during a special reception sponsored by Tennesseans for the Arts. During the reception, David Watson was presented a check on behalf of the Design Center for arts activities for Fiscal Year 2006. In receiving the award, David thanked the members of the General Assembly, and emphasized the contributions the Tennessee Arts Commission makes to quality of life in Tennessee. A state agency that funds and supports quality arts experiences, the Commission will award 850 grants during Fiscal Year 2006, totaling more than \$5.7 million dollars.

### STAND UP FOR THE ARTS



JOIN TENNESSEANS FOR THE ARTS TODAY!



**David Watson** is shown with (left to right): **Senator Randy McNally**, **Senator Jamie Woodson**, and **Kim McClamroch**, Commission Member, Tennessee Arts Commission

Tennesseans for the Arts is the state's leading arts advocacy organization. TFTA speaks on behalf of all the arts. For more information contact: [tfa2@comcast.net](mailto:tfa2@comcast.net), call 615.353.5056, or visit us at [www.tfarts.com](http://www.tfarts.com).



## Knoxville South Waterfront Planning Process Underway

Written by Jim Kennedy, President Kennedy, Coulter, Rushing + Watson, LLC

The Knoxville South Waterfront Redevelopment Plan, launched at the initiative of Mayor Bill Haslam, has entered its first phase, which will establish a framework in which future development can happen along the Tennessee Riverfront just south of downtown.

According to project planners, the process will have two hallmarks: a commitment to significant citizen and stakeholder input into the plan, and a focus on creating a plan that is economically viable and fiscally sound.

The plan's study area comprises the neighborhoods, business, industries and public facilities found along the two miles of riverfront south of downtown Knoxville bounded roughly by Island Home on the east, Scottish Pike on the west and Fort Dickerson Park on the South. The river bounds the study area on the north.

The planning team has created a website to promote public awareness and involvement. Citizens can weigh in with questions and comments and access all kinds of project information, including maps and graphics, at [www.knoxvillesouthwaterfront.com](http://www.knoxvillesouthwaterfront.com).

The first public meeting was held on November 17th, but subsequent meetings are scheduled for December 15th and January 26th, both Thursday evenings, at the Kerbala Shriners Temple on Mimosa Avenue. Times for the upcoming meetings will be posted on the website. Project information is also available through the office of the city's Chief Operating Officer, Dave Hill, who is also acting as project manager.

A interdisciplinary team of consultants, led by Hargreaves Associates, will be advised by the South Waterfront Oversight Committee, a group of 32 citizens and agency representatives, many of whom provide critical links back to the businesses and neighborhoods in the study area.

Phase I is scheduled to be completed in March.

## A Hole-In-One For Regional Leadership

The first East Tennessee Regional Leadership Association Golf Tournament was held at River Islands Golf Club on October 28, 2005. The golfers, from 10 East Tennessee counties, came out to support this event that raised over \$7,000 for the Regional Leadership program. Wackenhut Security Services, Newport Federal Bank, Jefferson Federal Bank, National Bank of Tennessee and Valley Printers were Corporate Sponsors of the Tournament.

left to right: **Dan Noe**, Jefferson County Alderman and ETRLA 2005 Class member, **Beth Lawson**, ETRLA Board member and **Jane Myers**, ETRLA Executive Director check in one of the 21 golf teams that participated in the first East Tennessee Regional Leadership Association Golf Tournament.